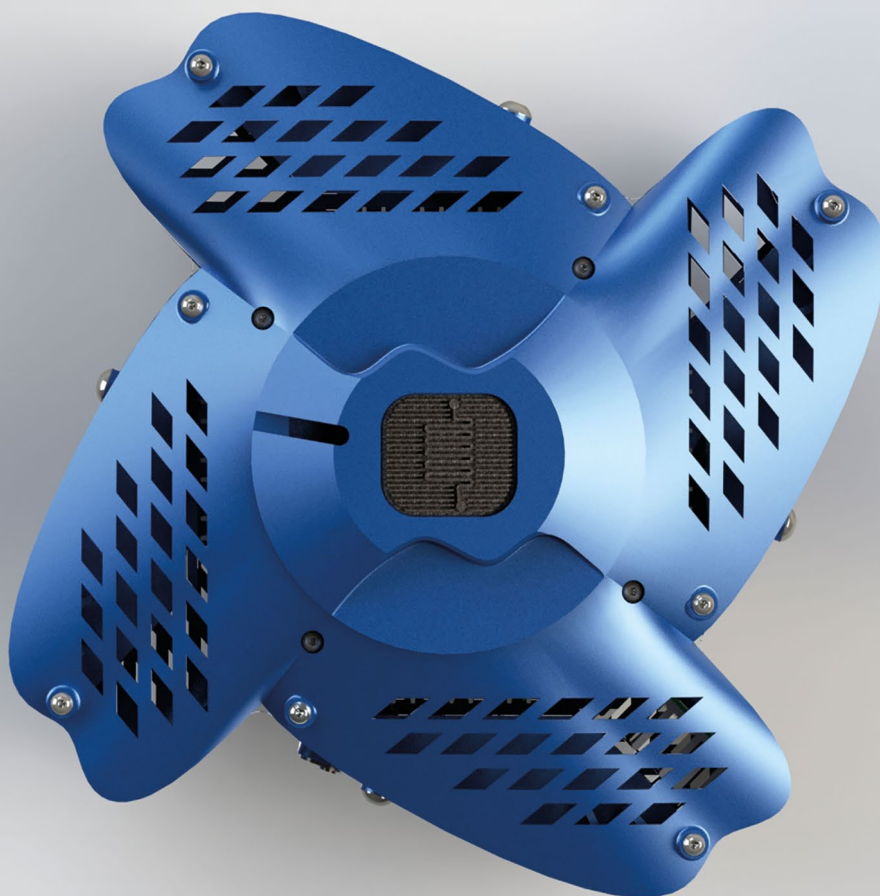




Batch and flow in one reactor with several wavelengths



- Batch, flow, stop-flow and CSTR reactions
- 7+1 wavelengths in one instrument
- Available in kit form or ready-to-use



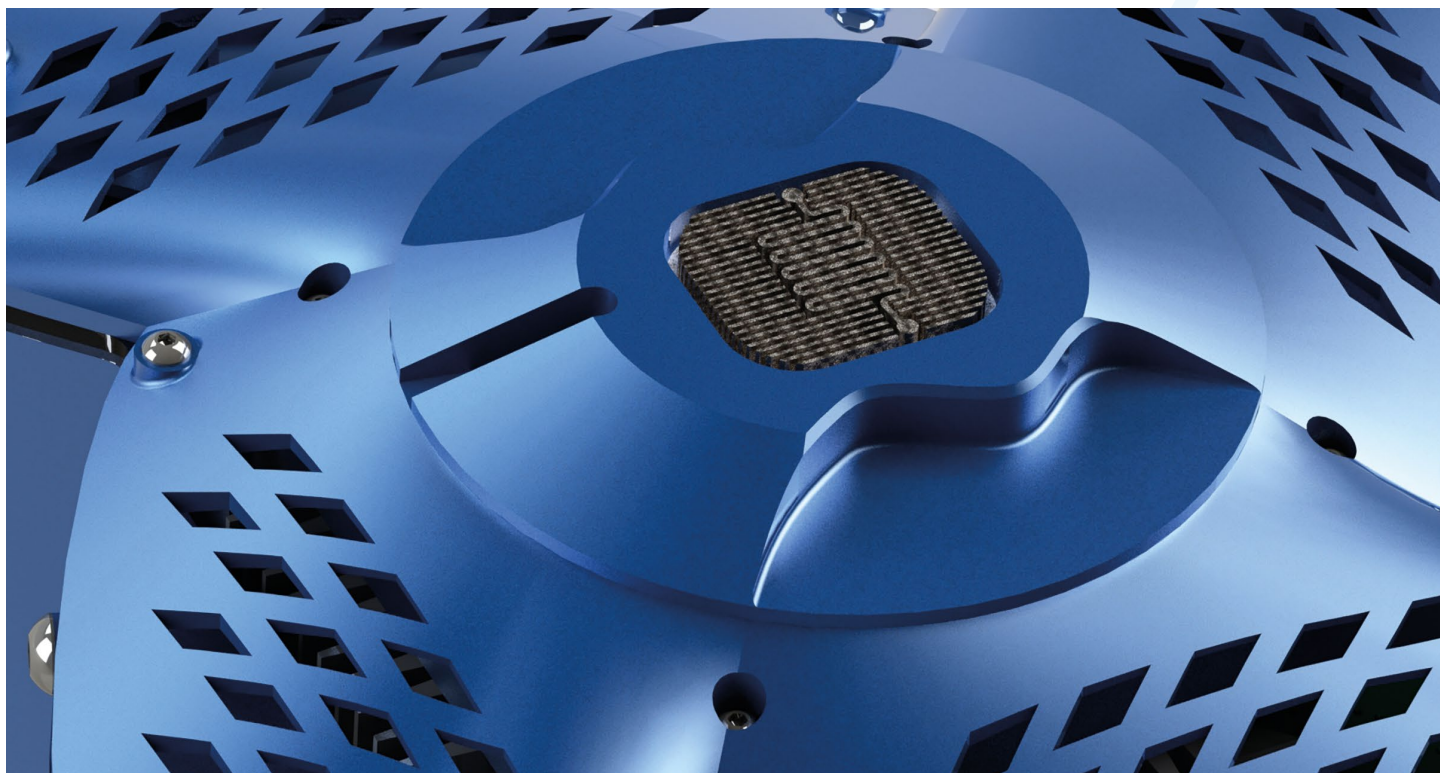
ABOUT THE REACTOR

The PhotoCube™ Pro is the first multi-wavelength instrument available for advanced photochemical applications. Several system configurations are available enabling the complete customization for specific needs, from 3D printable kits to complete ready-made reactors.

This reactor enables the implementation of multi-wavelength batch and continuous flow photochemical reactions. The multi-color option ranges from UVA to red. With the opportunity to select the color of the LEDs, the system can be fine-tuned for specific wavelengths and applications, furthermore, multiple wavelengths can be utilized at the same time.

FEATURES

Available wavelengths:	365, 395, 457, 500, 523, 595, 623 nm and white
Available batch reactor volumes:	4 mL and 20 mL glass vials
Available loop volumes:	2-20 mL
Available loop materials:	FEP or PFA
Temperature range:	20 to 100 °C
LED input power:	up to 128 W/color



For more information, please visit
www.thalesnano.com
LinkedIn: /company/thalesnano-inc-
Twitter: /thales_nano
Instagram: /thalesnano_inc/
Facebook: /ThalesNano/

ThalesNano Inc.
Zahony u. 7.
H-1031 Budapest
Hungary
Tel.: +36 1 880 8500
Fax: +36 1 880 8501
E-mail: sales@thalesnano.com

US Office
50 S. Penn St. Suite B-2
Hatboro
PA. 19040
USA
Phone: 215-534-3365
E-mail: USAsales@thalesnano.com