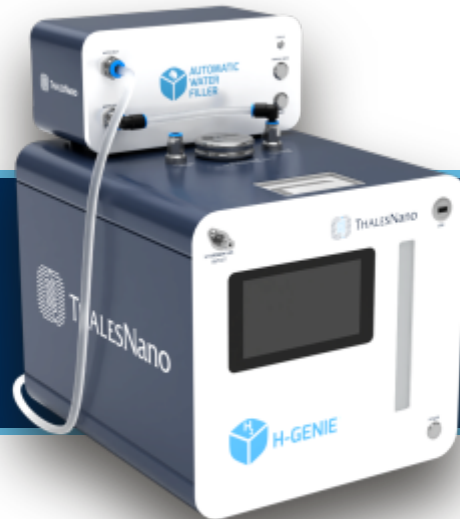




**UP TO 1 WEEK
EXTENDED RUNTIME FOR**



**ENJOY THE SAFETY OF UNLIMITED HYDROGEN GENERATION
WITHOUT THE NEED TO MANUALLY MONITOR THE WATER TANK LEVEL**

COMPATIBLE PRODUCTS

- H-Genie® II
- H-Genie® Lite
- THS System Controller
- THS ReAction Software

SAFE

When Paired, the Automatic Water Filter recognizes when the tank of H-Genie® starts to run out, and it will initiate a refilling cycle. Once finished, it automatically shuts down. It also monitors the water quality, and if the quality drops, it shuts down immediately.

AUTOMATIC REFILLING ABILITY FROM

- external water supply
- built-in water network

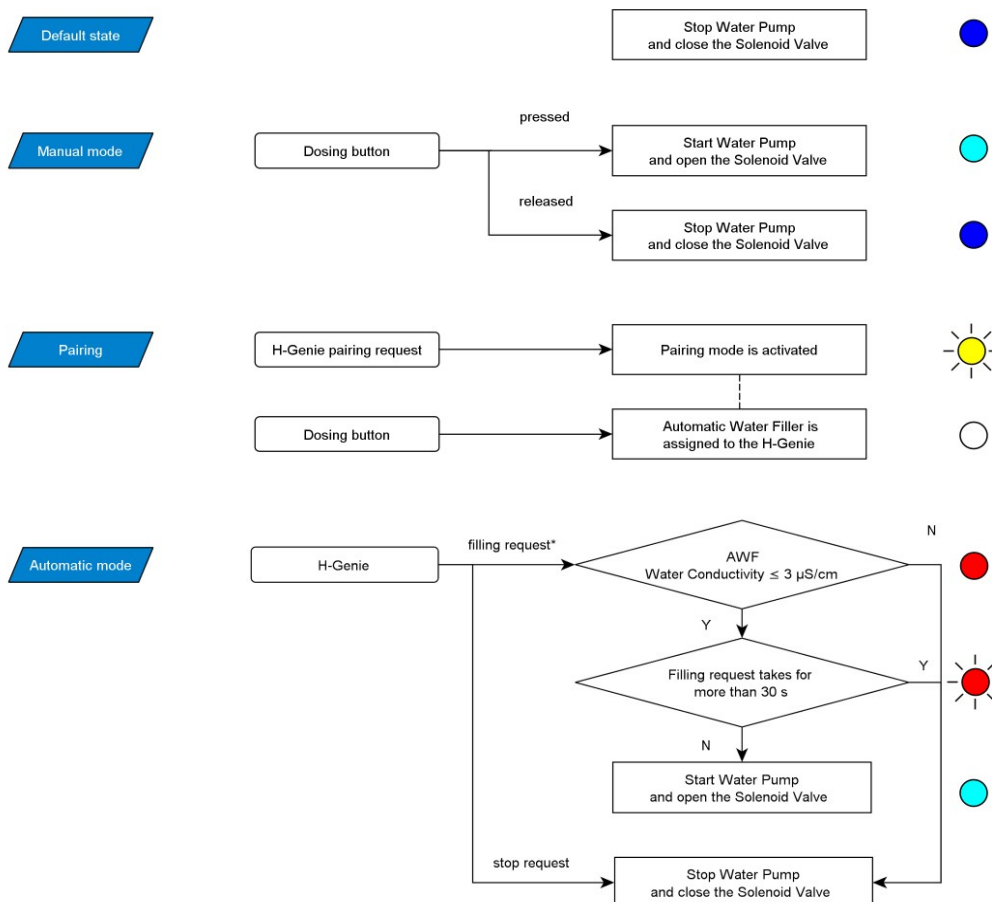
"MILLIPORE MILLI-Q" WATER QUALITY REQUIRED



TECHNICAL PARAMETERS

Recommended environment	indoor usage
Power requirements	Mains: 100V to 240V AC, 47-63Hz
Power input	Max. 1500 VA
Dimensions (H x W x D)	150 mm X 305 mm X 187 mm
Weight	5 kg
Outlet parameter	Tubing OD: 10 mm. The output valve can accept any connector with a male thread Press 1/8"
Operating and storage/transport environment	10-35°C; < 70% RH

OPERATION FLOW CHART



* H-Genie sends water filling request when the upper and the bottom level switches are in down position



For more information, please visit www.thalesnano.com
 LinkedIn: /company/thalesnano-inc-
 Twitter: /thales_nano
 Instagram: /thalesnano_inc/
 Facebook: /ThalesNano/

ThalesNano Inc.
 Záhony utca 7. | H-1031 Budapest | Hungary
 Phone: +36 1 880 8500
 Fax: +36 1 880 8501
 Email: sales@thalesnano.com
www.thalesnano.com

US Office
 50 S. Penn St. Suite B-2
 Hatboro PA. 19040
 USA
 Phone: 215-534-3365
 E-mail: USAsales@thalesnano.com

